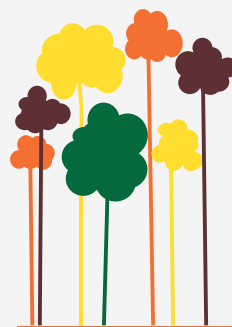


EDUCATIONAL
PACKAGES



**BOHMER'STM
TREE CARE**

Reliable. Safe. Professional.





ABOUT US

- ✿ We have gained a respected reputation in Australia due to Clive and his team's attention to quality, professional service and the skillful art of safe tree care.
- ✿ We work with councils and organisations to stay abreast of regulations and training around tree care, preservation and safety.
- ✿ We provide a 24/7 call out response to emergency services during storms and bushfires.
- ✿ Tree removal is a last resort and we have respect for the environment and wildlife in all our operations.
- ✿ We work on a range of education projects with local schools and community groups and donate mulch and timber for reuse.

"We are a dedicated, family owned and operated local business and are proud to service our community and our spectacular natural surrounds."

— Clive Woodnutt (Bohmer)

WHO IS BOHMER?

Bohmer means 'Man of the Trees', and was a title given to Founder and Director Clive Woodnutt whilst climbing and caring for trees for over 30 years across the globe.

Clive's technical knowledge and safe, efficient climbing and arborist skills plus his professionalism, indepth knowledge and eco-friendly approach to tree care is highly regarded amongst his industry peers, clients and the community.

Clive is the only registered, practicing Arborist in the Illawarra with industry association Arboriculture Australia.

SERVICES

- ✿ Tree Removal
- ✿ Tree Pruning and Maintenance
- ✿ Stump Grinding
- ✿ Emergency and Storm Damage Insurance Work
- ✿ Dead Wood Removal
- ✿ Fire Hazard Reduction
- ✿ Tree Reports
- ✿ Efficient Modern Technology
- ✿ Risk Assessments
- ✿ Mulching

See website for more



Bohmer's Tree Care is an award winning, family owned arboriculture and tree care service that prides itself on its approach to environmental awareness and ethical operations within the natural landscape.

We are passionate about passing on the in-depth knowledge we have about trees and the important role they play in all facets of our lives and passing this onto future generations to encourage them to engage and interact, plus take care of and therefore responsibility for, their environment.

Our program highly promotes the importance of the environment and our role in shaping sustainable futures. Students are provided with opportunities to respond to their curiosity, work collectively with others in taking responsibility of their local environment and develop informed decisions about current environmental issues.

The program aligns with the National Curriculum, with strong links to the NSW Science and Technology Syllabus for the Australian Curriculum.

The program opens itself to further learning within the classroom. Using scientific inquiry, teachers can continue to facilitate engaging learning activities that find answers to interesting questions about the natural world.

SEE PACKAGE OPTIONS INSERT OR CONTACT US FOR A COPY.

WHAT'S INCLUDED

- 🌸 Interactive & education session: 45 mins
- 🌸 Resources (dependant on students' and school's resources)
- 🌸 Free mulch for your school garden
- 🌸 Free group/class and teacher gift
- 🌸 \$100 off tree work
- 🌸 \$50 off school tree safety consultancy
- 🌸 Discount on outdoor classroom projects using recycled timber following tree work at your school



**WATCH A VIDEO OF
THE TREE WHISPERER
IN ACTION AT
YOUTUBE.COM/
BOHMERSTREECARE**

WHAT OTHERS SAY

"Our work with Bohmer's Tree Care, with Clive, Natasha and their team, has been an amazing community networking addition to our award winning school garden.

We were thrilled when Clive and his team arrived with free mulch and interesting logs to add to our indigenous garden. As soon as Clive drove away there were kids playing on and over them all!

They look so great in our new learnscape area and their kindness and generosity have been much appreciated. That was beyond our expectations in terms of cost savings and the speed with which we accomplished our goal of completing our project.

Thanks for keeping an eye out for us! Great job!"



- Coledale Primary School

"Bohmer's Tree Care were very professional to work with. The work was completed with minimal impact and to a very high standard.

The communication was prompt and efficient, making it easy to plan around work onsite."



**- Chris Hopkins, Principal,
Scarborough Public School**



LET BOHMER'S TAKE CARE OF YOUR TREES

CONTACT

Head Office 02 4263 4078

E info@bohmerstreecare.com.au

Natasha Woodnutt - Managing Director

M 0481 164 996

E natasha@bohmerstreecare.com.au

On Site

Clive Woodnutt (Bohmer) - Head Arborist & Director

M 0432 789 530

E clive@bohmerstreecare.com.au

CONNECT

- BohmersTreeCare
- Bohmer's Tree Care
- bohmerstreecare
- Bohmer's Tree Care

www.bohmerstreecare.com.au

PACKAGE 1:

Lesson Focus: What do we know about trees and how they grow?

Outline:

The Tree Whisperer and/or Fairy Whisperer characters will give students the opportunity to share their knowledge about trees, tree parts and its function and how they benefit us and our environment. The children are encouraged to demonstrate their knowledge and a tree model will be used to illustrate tree parts and functions, including how to plant a tree correctly.

Students are encouraged to practice the skills they have learned at home and contribute to the environmental and social benefits of planting a tree.

This lesson emphasises the key message of 'universal wellness'. Students make connections to the important role trees have on our health and the environment we live in. We place a strong emphasis on: 'Trees make us feel better and help us live healthier lives.'

Learning Objectives:

- Develop a basic knowledge in identifying parts of a tree and functions
- Begin to develop an awareness into the benefits trees give us and our environment
- Develop an understanding of how to plant a tree correctly and why arborists focus on planting a certain type of tree in the right place
- Basic understanding of how a tree grows {Photosynthesis}
- Awareness around the role of recycling
- Understanding around role of trees in producing fruit / healthy natural foods

Learning Outcomes:

Students will share their prior knowledge about trees and pose questions to facilitate curiosity and an appreciation for our natural environment.

Students will develop a scientific understanding regarding the living organism of a tree and its primary functions, including its role in biodiversity.

They will put their learning into practice and contribute to the efforts of sustainability by planting a tree/seedling in their school or home environment.

Targeting: Early Stages 1 - Stage 1

PACKAGE 2:

Lesson Focus: Photosynthesis: How do trees grow?

Outline:

The children will be given the opportunity to engage in an interactive photosynthesis workshop, role play the process of how trees grow {photosynthesis} and how it is key to the growth of 'all things green'.

The lesson will involve giving children simple tree facts to stress the importance of the trees around them and participate in the 'Tree Whisperer Pledge' that summarises tree preservation and protection of trees.

Learning Objectives:

- Develop an understanding of the process of photosynthesis
- Gain factual knowledge of trees and why they are important
- Gain a stronger understanding in linking organism of a tree and its function
- Promote the role of trees and healthy eating

Learning Outcomes:

Students will identify the needs, changes and growth of trees, including the structural and physical conditions of the environment, which affects its growth and survival.

The students will gain an understanding of photosynthesis.

They will explore what happens during photosynthesis in plants and its process.

Students will apply what they have learnt by contributing their ideas to discussions on ways people can help in the cycle of photosynthesis.

Targeting: Stage 1 - Stage 2

PACKAGE 3:

Lesson Focus: Tree Whisperer Talk + Walk

Outline:

Students engage in an outdoor experience amongst the trees within the school grounds to discover various species, physical functions of trees both above and below the ground.

They will learn the difference between deciduous trees and coniferous trees and learn basic ID principles and review the concepts of photosynthesis and comprehension of planting the correct type of tree in an optimum location and environment.

Learning Objectives:

- Review tree functions in relation to live trees within the school environment
- Learn the difference between deciduous trees and coniferous trees
- Gain basic ID tree knowledge in relation to their school grounds
- Review the concept of photosynthesis and planting the correct type of tree in an optimum location and environment
- Understand role of trees in healthy eating and environmental protection

Learning Outcomes:

Students will gain basic tree identification skills within their outdoor school environment.

They will investigate and apply key strategies in identifying tree types.

Students will learn to identify trees from their leaves and distinguish between deciduous trees and coniferous trees.

Through reflective learning, students will share what they have learnt, discuss the differences in tree species, effective methods in the identification process, and evaluate the strengths and limitations of their investigation process.

Targeting: Key Stage 2 – Key stage 3

ALL BOOKINGS INCLUDE:

- Interactive & Education Session: 45 mins
- Resources (dependant on students' and school's resources)
- Free mulch for your school garden
- Free group/class and teacher gift
- \$100 off Tree Work
- \$50 off School Tree Safety Consultancy
- Discount on outdoor classroom projects using recycled timber following tree work at your school

**T&Cs apply*

**Numbers limited – suitable for one standard school size class only*

Costings:

Tailored packages available – please enquire

**Please note The Tree Whisperer and Tree Fairy characters subject to availability*

LIMITED AVAILABILITY – ENQUIRE / BOOK: info@bohmerstreecare.com.au

Visit our YouTube channel and Facebook Page to see a video of the Tree Whisperer and Tree Fairy in action!

www.youtube.com/bohmerstreecare | www.facebook.com/bohmerstreecare

We look forward to working with you and your school.